



# QUARTERLY

# Newsletter



## WHAT'S INSIDE?

GET TO KNOW OUR PIEF LOYAL SUPPORTERS

A SPECIAL GIVING TUESDAY THANK YOU

SNEAK PEEK AT THE 2024 SCHOLARSHIP PROGRAM

## PEARL AND IVY EDUCATIONAL FOUNDATION 2023 IN REVIEW:

### *35 Years of Giving*

By Raven L. Hill, President

This 35th anniversary year of the Pearl & Ivy Educational Foundation (PIEF) is one to remember. In partnership with Alpha Kappa Alpha Sorority, Inc., Xi Omega Chapter, we achieved a tremendous milestone: awarding our highest single-year total in scholarships – \$150,000 – bringing our overall investment in Washington, DC students to **\$1 million**.

Those funds have faces behind them – donors who believe in the promise of our youth, and scholars who believe in the beauty of their dreams.

PIEF was created to provide scholarships to students in our nation’s capital, building on the legacy of service established by Xi Omega Chapter in 1923. For 35 years, PIEF and Xi Omega have worked hand-in-hand, bolstered by strong community collaborations and the generosity of donors like you. We cannot thank you enough for your support over the years.

As we look ahead to 2024, we ask for your continued investment in DC students. Join us this spring when the Pink Hat Tea fundraiser makes its long-awaited, in-person return and gear up for the Norma E. Boyd 5K Race for Education in the fall!

Help us make one million more dreams come true – scholar by scholar, year after year.



## CULMINATING OUR 35 YEAR CELEBRATION BY RECOGNIZING OUR COMMUNITY PARTNERS

Join us as we dedicate this quarter's newsletter to highlighting our community partners!



**Judith Batty** is a board director, executive and general counsel recognized for her leadership in the realm of mergers and acquisitions. With experience in major joint ventures and partnerships, she specializes in long-term strategy in the global energy industry handling up to seven billion dollars in transactions. Her wide-ranging international experience in cyclical, commodity-based businesses informs her approach during changing economic environments.

She also advances robust discussions on enterprise risk, ESG, and DE&I at the board level. Currently, Batty is a board member of the Metropolitan Washington Airports Authority, which operates and manages Reagan National and Dulles International Airports, the Dulles Toll Road, and oversees the Metro-rail construction extension to Dulles airport and Loudoun County. She co-chairs both the Finance and Executive & Governance Committees.

**Roslyn Hopkins-Fernandes** is a highly experienced Director of Account Management for Major Accounts at United Healthcare, with over 25 years of industry expertise. In this role, she leads a team that oversees healthcare programs for both commercial and public sector clients, guiding benefit plan design, regulatory compliance, and member engagement.

Hopkins-Fernandes supports the Pearl and Ivy Educational Foundation because *she firmly believes that every child, regardless of their economic and social background, deserves the opportunity to advance their education.* To build the best society possible, we must foster diverse thoughts and perspectives, recognizing and nurturing the potential in those who may be overlooked and underserved. By contributing to this foundation, she is helping to create a more inclusive and equitable educational landscape where all children have a chance to thrive and contribute to a brighter future for our society.

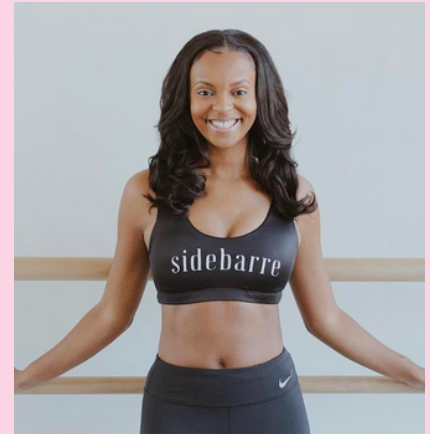






**Elmira Gwynn** strongly advocates for family restoration, community, and restorative justice. Her professional career spans over 60 years. In addition to being an entrepreneur, Gwynn retired from United Healthcare as vice president of operations and legislative affairs. After retirement, she subsequently moved to the federal government as a senior management and program consultant and then a full-time staff member, where she is currently able to continue her advocacy for social justice for men and women in the criminal justice system in the District of Columbia.

**Jillian Carter**, a former pointe ballerina, saw a gap in the market when she started taking barre classes in the District of Columbia. Picking up on the fact that she didn't see much in the way of diversity among clientele and instructors at mainstream studios, she decided to open Sidebarre, a Black-owned barre company that hosts classes all around the DC and Maryland. Founded in 2018, Sidebarre is a high-intensity, low-impact, full-body workout. The classes build & tone in all of the right places, sculpting your best body. With inclusivity being the focus, Sidebarre strives to create a safe space for women to work out, keeping their physical and mental well-being first.



**Deborah C. Brittain** is the past president and chairman of the Board of the Association of Junior Leagues International and the former executive vice-president of her late husband's executive search firm, Preod LLC. Her years of volunteer service expand the fields of education, board governance, family and child services, health, social justice, and the arts. Her background also consists of a Simmons University Trustee position (where she also earned her Master of Social Work), Dean of the Harvard Business School Advisory Board, and the National Advisory Board of The Salvation Army (for 18 years). **Continued...**

...**Continued.** Since 2013, Ms. Brittain has managed private scholarships in partnership with the Arlington, Virginia NAACP; the Progressive Life Center of Washington, District of Columbia; The KEO Foundation of Maryland and The Women of the Dream program in Camden, New Jersey.



Over the years, **the Woodson Center** has brought training and technical assistance to more than 2,600 leaders of faith-based and community organizations in 39 states and helped them attain more than ten times the funding expended by the Woodson Center. The Center's mission is to empower community-based leaders to promote solutions that reduce crime and violence, restore families, revitalize underserved communities, and assist in the creation of economic enterprise. It aims to identify and empower individuals who embrace its principles to transform their lives and their communities. The Woodson Center's principles are: competence, integrity, transparency, resilience, witness, innovation, inspiration, agency, access, and grace.

For over a decade, **Crystal L. Bailey** has put the “pro” in protocol as owner of **The Etiquette Institute of Washington**. An experienced consultant and public speaker, she is dedicated to aiding business and young professionals in polishing their executive presence, networking and fine dining etiquette. Bailey is a graduate of Howard University and William & Mary Law. She received her formal etiquette training at Debrett's of London and Etiquette à la Française of Montpellier. She is a proud member of Protocol & Diplomacy International's Protocol Officers Association and the Cercle International des Experts en Etiquette Française. Recognized for her fresh approach, Bailey is called upon for her expertise by Fortune 500 companies and international media outlets such as BBC, CNN, and French Television. When she's not traveling the globe, she time travels by way of 60s soul and funk music.







**Rhonisha D. Franklin**, owner of R.Dione Foto, is an award-winning photographer with over 15 years of experience specializing in portraiture for people of color. Franklin prides herself on her ability to create clean classic images that enable people to present their best selves. Some of her most notable features and awards include the January 2018 TIME Magazine cover, the Spring 2021 Purple & Gold Magazine cover and full feature spread, the Fall 2022 Howard Magazine cover and full feature of the female deans of Howard, the first Sony Alpha Female+ Grant recipient 2020, and of course her most widely known project, Profile Noire. Franklin's mission is to change the visual representation of women of color. *Franklin supports PIEF because she believes everyone should be able to create the lives that they truly desire and having a sound education, strong network of like-minded people, and financial freedom are the foundation to the fulfillment of one's own destiny.*

**Upper House Logistics** is rooted in excellence, a focus fostered by its founders and sisters, Rhonisha D. Franklin and Latina Baxter. The dynamic duo received their undergraduate degrees from Howard University and are HR professionals with over 15 years of corporate human resources experience. Franklin received her MBA from Howard University and Baxter obtained hers Masters from the University of Illinois. Together they manage a fleet of delivery service vehicles that provide services to local residents in the Tempe, Arizona area. Understanding that success lies within the people they employ and the vendors they work with, the company maintains a strong focus on the core value of "P.I.T Stop - Partnership Innovation and Trust are our Steps To Optimal Performance."





+ **GIVING  
TUESDAY**

**DEAR PIEF MEMBERS,  
COMMUNITY, AND FRIENDS:**

**THANK YOU!**

**FOR YOUR SUPPORT &  
CONTRIBUTIONS TO OUR  
2023 GIVING TUESDAY  
FUNDRAISING CAMPAIGN.**

**YOUR SUPPORT IS GREATLY  
APPRECIATED!**

---





# SCHOLARSHIP PROGRAM



COMING

SOON

The 2024 Scholarship Program will launch in early January. Stay tuned for more info!

Scholarship recipient requirements:

- DC resident
- Attend DC public high school or public charter high school
- Graduating, college-bound senior
- 2.5 GPA or higher

## For More Information



Scan to learn more about our scholars & the PIEF scholarship program!

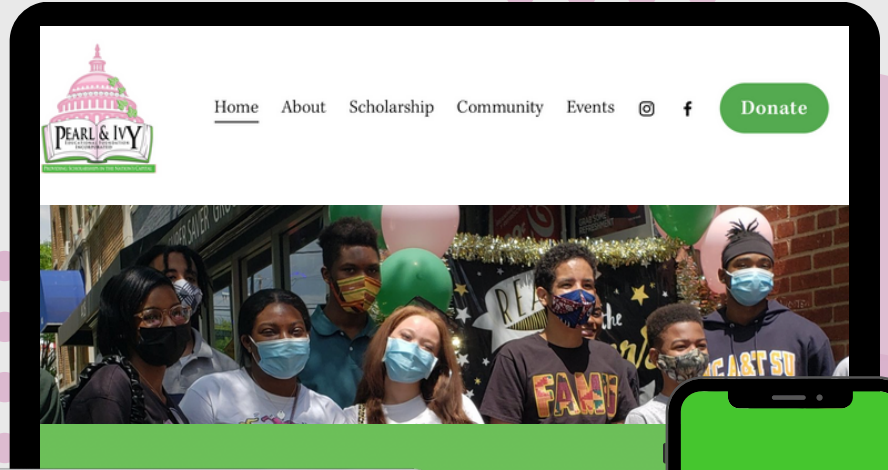




# WANT TO LEARN MORE ABOUT PEARL AND IVY EDUCATIONAL FOUNDATION? VISIT [PIEFDC.ORG](http://PIEFDC.ORG)

Explore the PIEF website for more about:

- Our history
- Past scholarship recipients
- Annual reports
- Donation options
- Board of Directors
- Newsletters
- Event photos
- ...and more!



## Pearl & Ivy Educational Foundation, Inc.

### CONNECT WITH US ON SOCIAL MEDIA

Instagram: @PIEFDC

Facebook: @PIEFDC

### DONATE AT

[piefdc.org/donate](http://piefdc.org/donate)

### CONTACT US

P.O. Box 75094

Washington, DC 20013

[www.PIEFDC.org](http://www.PIEFDC.org)

[info@piefdc.org](mailto:info@piefdc.org)

### BOARD OF DIRECTORS

Raven L. Hill, President

Amanda Alexander, Executive Director

Angela Scarborough, Vice-President

Jennifer Coleman, Treasurer

Gina McLaughlin, Financial Secretary

Anitra Reed, Recording Secretary

Alyssa King Turner, Parliamentarian

Nadine Eads, Member-at-Large

Iris McCollum Green, Member-at-Large

Lavdena Orr, Member-at-Large

Monice Sanders, Member-at-Large

Jamilia Walker, Member-at-Large

### NEWSLETTER STAFF

Jamilia Walker, Editor

Jennifer Coleman

Nyia Harris